

S3246

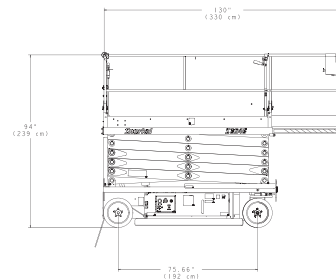
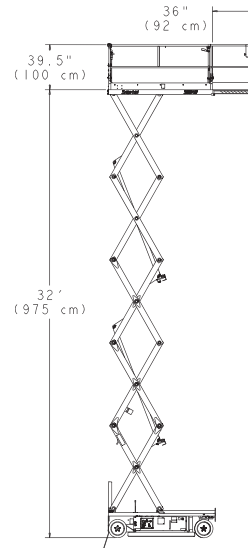


**Slab
Scissor**

Snorkel

www.snorkelusa.com

Snorkel S3246	Platform	
	Height.....	32' (9.75 m)
	Size	45" x 94" (114.3 cm x 238.7 cm)
	Rollout Extension	36" (91.4 cm)
	Platform Length – extended.....	130" (330.2 cm)
	Capacity	700 lbs. (318 kg)
	Capacity on Rollout Extension	250 lbs. (113.3 kg)
	Machine Dimensions	
	Overall Stowed Height (to Guardrails).....	94" (239 cm)
	Overall Stowed Height (Guardrails folded).....	67" (1.7 m)
	Overall Length.....	96" (2.4 m)
	Weight.....	6,620 lbs. (3,003 kg)
	Ground clearance	
	At machine center	4" (10.1 cm)
	Pothole protection deployed	1" (2.5 cm)
	Performance	
	Tire size (Solid Rubber)	16" x 5" (40.6 cm x 12.7 cm)
	Gradeability.....	25%
	Drive speed – Stowed.....	2 mph (3.2 km/h)
Drive speed – Raised.....	.05 mph (0.8 km/h)	
Electrical system	24 volts	
Batteries.....	240 amp-hr	
Charger	19 amp	
Maximum drive height.....	32' (9.75 m)	
Turning radius outside	101" (2.5 m)	
Turning radius inside.....	10" (25.4 cm)	



Standard Features

- Pothole Protection System
- Level Sensor
- Joystick Control on removable console
- Two wheel parking brakes
- Driveable at full height
- Center pivot-type steering
- Fully proportioned drive/lift
- Dual wheel drive system
- Drive motion alarm
- Swing-out trays
- Non-marking tires
- Fork lift loadable from 3 sides
- 125 volt GFCI AC outlet at platform
- Fold down handrails

Options

- Horn
- Flashing Light
- Battery Condition Indicator
- Lanyard Anchors
- Key Switch
- Swing Gate
- Maintenance free batteries

DANGER: Models described in this brochure are NON-INSULATED and do not provide electrocution protection from contact with or close proximity to energized conductors which is pointed out on decals and placards attached to the machine. Only qualified and trained operators are to be authorized to use and operate a work platform. Aerial work platforms must be elevated only on firm, level surface. Products in this brochure comply with applicable ANSI Standards. This literature is for illustrative purposes only. Consult Operating Maintenance and Parts Manuals for proper procedures. Specifications may vary and are subject to change without notice or obligation.

Manufacturing Plant

2009 Roseport Road
 Elwood, Kansas 66024
 800-255-0317
 785-989-3000
 785-989-3070 Fax

Australia

26 Redfern Road
 Wetheril Park NSW
 2164 Australia
 (02) 9725 4000
 (02) 9609 3057 Fax